



Measuring Up[®] Customers Increased API and CST Scores

Los Angeles Schools + Measuring Up[®] = ELA CST Success



The following customers who purchased the Measuring Up[®] program for English Language Arts saw an increase in their scores and API.

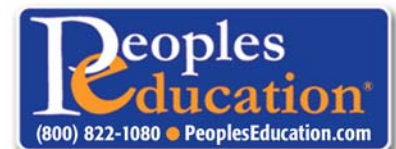
Customer	Average Increase in ELA Proficiency from 2006–2008 or 2007–2008*	API Increase in Number of Points 2006–2008
Napa Street Elementary	61%	94
Local District 1		
Pacoima Middle School	62%	11
Local District 2		
Audubon Middle School	18%**	10**
Local District 3		
Virgil Middle School	75%	63
Local District 4		
Main Street Elementary	46%	78
Local District 5		
Florence Avenue Elementary	55%	15
Local District 6		
Henry T. Gage Middle School	88%	24
Local District 6		
Parmelee Elementary	57%	68
Local District 7		
Andrew Carnegie Middle School	121%	30
Local District 8		

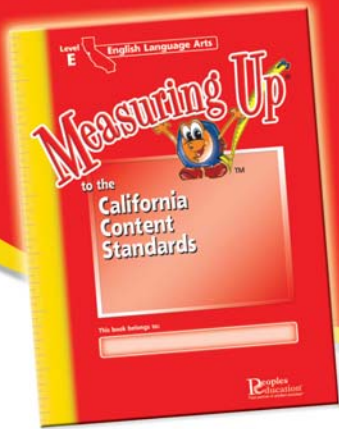
*Averaged across all the grade levels for which CST scores are reported.

**Average increase from 2007–2008, because Measuring Up[®] was not used in the 2006–2007 school year.

Measuring Up[®] Instruction and Assessment is available for ELA and Math, Grades 2–CAHSEE Exit, and Science, Grades 5 & 8

Contact your local representative for more information.
Don Bechtold
1-213-400-4481
Donbechtold1@aol.com





Measuring Up[®] Customers Increased API and CST Scores

Los Angeles Schools + Measuring Up[®] = ELA CST Success



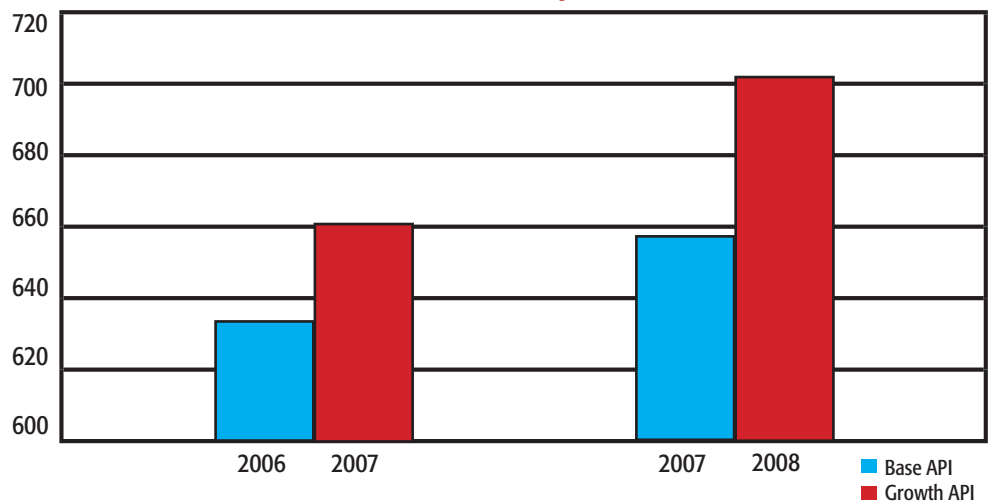
Parmelee Elementary School Meets AYP

Parmelee Elementary School from Local District 7 purchased Measuring Up[®] in March 2007 and March 2008. The school made great gains and met AYP in 2008 and their API rose 68 points since 2006.

Parmelee Elem School

	2006-2007	2007-2008
Base API	634	657
Growth API	661	702

Parmelee Elementary API Increase



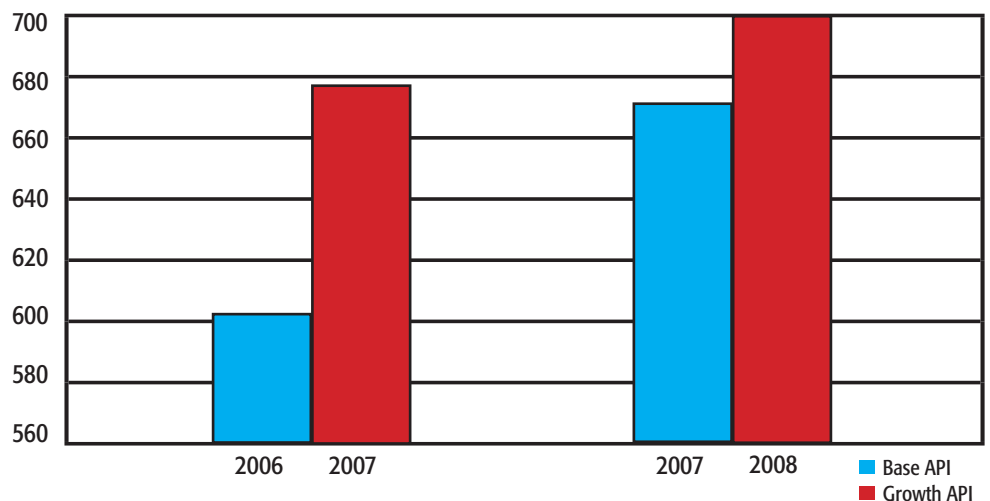
Napa Street Elementary School

Napa Street Elementary School from Local District 1 purchased Measuring Up[®] materials in January 2007. The school's API rose 94 points since then and their average ELA CST scores increased by 61%!

Napa St. Elem School

	2006-2007	2007-2008
Base API	607	674
Growth API	677	701

Napa St. Elementary API Increase



Contact your local representative for more information.

Don Bechtold

1-213-400-4481

Donbechtold1@aol.com

